

2025

SUGGESTED RETAIL PRICE LIST

VENTED GAS LOGS

RGA



HARGROVE PREMIUM PRODUCTS

207 Wellston Park Road, Sand Springs, OK 74063



Find us at www.hargrovegaslogs.com

12/12/2024

TABLE OF CONTENTS

	PAGE #
HOW TO USE THIS PRICEBOOK	1
SINGLE SIDE - STANDARD SIZE VENTED LOOSE LOGS	2
SINGLE SIDE BURNER KITS	3
SINGLE SIDE - STANDARD SIZE VENTED LOOSE LOGS	4
HIDDEN CONTROL BURNER	5
LARGE LOG SETS AND BURNER KITS	6-7
SEE THRU SETS	8
SEE THRU SHALLOW SETS	9
FULL PAN VENTED LOOSE LOGS AND BURNER KITS	10
FULL PAN SPECIALTY SHAPES	11
FIRE GLASS & STAINLESS BURNERS	12
OUTDOOR BURNERS AND BURNER KITS	13
OUTDOOR FIREPIT LOG STACKS	14
OLDE WORLD BASKET & KIVA LOG SET	15
PINNACLE SERIES	16
ACCESSORY ADD ON KITS	17
SAFETY PILOT KITS & REMOTE CONTROLS	18-19
ELECTRONIC IGNITION SYSTEMS	20
CONTROL SYSTEM CONCEALER	21
REFRACTORY PANELS / WOOD GRATES	22
INDIVIDUAL LOGS	23-24

HOW TO USE THIS PRICE BOOK

Step 1: SELECT LOG SET

GAS LOG MODEL # KEY

FRESH CUT
CLS - Classic Oak
DRS - Driftwood
GOS - Grand Oak
HSS - Hargrove Select
MTS - Mountain Timber
WPS - Western Pine
CHARRED SERIES
BPS - Blazing Pecan
ISS - Inferno Series
MIS - Magnificent Inferno
SPS - Supreme Ponderosa
TIS - Twilight Inferno
RADIANT HEAT SERIES
ATS - Aspen Timbers
CTS - Cross Timbers
CYS - Canyon Timbers
RTS - Rustic Timbers
WTS - Woodland Timbers
LARGE SETS
MTS - Mountain Timber
SUS - Summit Oak
KCS - Kodiak Char
KSS - Kodiak Split
PAGE REFERENCE
SINGLE SIDE SETS: PAGE 2 & 4
LARGE SETS: PAGE 6-7
SEE THRU SETS: PAGE 8-9

CONTEMPORARY STYLES MODEL # KEY

LOGS	CONTROLS
OOS - Oak	0A - No Safety Pilot - Match Light
WPS - Western Pine	1B - Manual Safety Pilot (CP Valve)
DRS - Driftwood	1T - Manual Safety Pilot (SKC Valve)
SPECIALTY SHAPES	1H - Latchtap w/ on/off remote
FCBS - Colonial Cannon Balls	1F - Pilot w/ Variable Remote
FRR7 - Blazing River Stones	1K - Pilot w/ Variable Remote
PINNACLE LOGS	2A - Millivolt w/ Wall Switch
SRS - Sierra Stack	2B - Hi Cap Millivolt w/ Wall Switch
EVS - Everest Stack	3F - Electronic Ignition w/ Variable Remote
OPS - Olympia Stack	3X - Electronic Ignition w/ Variable Remote
PAGE REFERENCE	
CONTEMPORARY LOGS: PAGE 10	
SPECIALTY SHAPES: PAGE 11	
FIREGLASS: PAGE 12	
FIREPIT LOG STACKS: PAGE 14	
OLDE WORLD BASKET: PAGE 15	

Loose Log Model # Example - CLS2406AA

CLS	24	06	AA
Log Series	Log Set Size	# of logs	Application

Step 2: SELECT BURNER SYSTEM



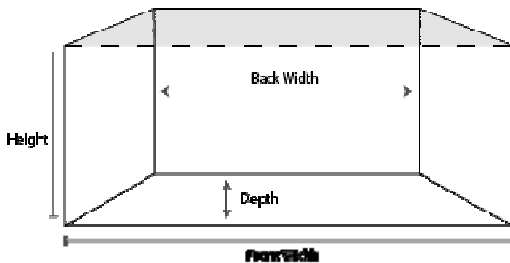
BURNER KIT MODEL # KEY

EB - E-Burner - pg 3	DS - Double Stack Burner - pg 7
HB - H-Burner - pg 3	TS - Triple Stack Burner - pg 7
HC - Hidden Control Burner - pg 5	ST - See Thru - pg 8
SF - System 4 Burner - pg 3	SS - See Thru Shallow - pg 9
ES - Ember Supreme Burner - pg 6	FP - Full Pan - pg 10
	RM - Pinnacle Burner - pg 16

Burner Kit Model # Example - 24RNEB0A5

24	R	N	EB	0A	5
Burner Kit Size	Certification	Gas Type	Burner Style	Valve Style	Grate Gauge

Step 3: Select Size



Step 4: Select Controls

page 18-21



Step 5: Select Accessories

page 17



SINGLE SIDE - VENTED LOOSE LOGS

***WHEN ORDERING A FULL SET, CHOOSE A LOOSE LOG KIT AND MATCH IT WITH A BURNER KIT ON THE NEXT PAGE**
FRESH CUT AND CHARRED SERIES ARE REFRACTORY CONCRETE LOGS
RADIANT HEAT SERIES ARE CERAMIC FIBER LOGS

SET SIZE	LOOSE LOG MODEL #	LOOSE LOG PRICE	WEIGHT LBS	SET SIZE	LOOSE LOG MODEL #	LOOSE LOG PRICE	WEIGHT LBS	SET SIZE	LOOSE LOG MODEL #	LOOSE LOG PRICE	WEIGHT LBS
FRESH CUT SERIES				CHARRED SERIES				RADIANT HEAT SERIES			
CLASSIC OAK				BLAZING PECAN				ASPEN TIMBERS			
15"	CLS1504AA	\$120	16	18"	BPS1804AA	\$359	40	21"	ATS2113RG	\$858	12
18"	CLS1805AA	\$213	32	21"	BPS2104AA	\$479	44	24"	ATS2414RG	\$967	15
21"	CLS2105AA	\$244	41	24"	BPS2405AA	\$582	61	30"	ATS3015RG	\$1,077	21
24"	CLS2406AA	\$268	44	30"	BPS3006AA	\$667	68	36"	ATS3616RG	\$1,136	22
30"	CLS3007AA	\$369	58	INFERNO SERIES				CANYON TIMBERS			
DRIFTWOOD				18"	ISS1805AA	\$294	23	21"	CYS2113RG	\$709	12
18"	DRS1805AA	\$228	28	21"	ISS2106AA	\$353	29	24"	CYS2416RG	\$820	15
24"	DRS2406AA	\$285	32	24"	ISS2406AA	\$542	43	30"	CYS3017RG	\$933	20
28"	DRS2807AA	\$397	44	30"	ISS3007AA	\$686	45	36"	CYS3619RG	\$974	21
GRAND OAK				MAGNIFICENT INFERNO				CROSS TIMBERS			
18"	GOS1805AA	\$291	38	21"	MIS2106AA	\$450	41	21"	CTS2108RG	\$622	12
21"	GOS2105AA	\$342	46	24"	MIS2407AA	\$555	50	24"	CTS2409RG	\$728	15
24"	GOS2406AA	\$447	68	30"	MIS3008AA	\$694	62	30"	CTS3010RG	\$841	20
30"	GOS3007AA	\$577	93	36"	MIS3610AA	\$796	75	36"	CTS3611RG	\$914	21
36"	GOS3608AA	\$704	103	SUPREME PONDEROSA				RUSTIC TIMBERS			
42"	GOS4208AA	\$858	136	24"	SPS2407AA	\$712	75	21"	RTS2110RG	\$674	11
48"	GOS4808AA	\$980	151	30"	SPS3008AA	\$934	111	24"	RTS2411RG	\$764	14
HARGROVE SELECT				36"	SPS3609AA	\$1,178	132	30"	RTS3012RG	\$875	16
18"	HSS1807AA	\$332	41	42"	SPS4211AA	\$1,428	160	36"	RTS3614RG	\$930	18
21"	HSS2108AA	\$447	54	48"	SPS4812AA	\$1,596	176	WOODLAND TIMBERS			
24"	HSS2409AA	\$577	69	60"	SPS6013AA	\$1,825	226	21"	WTS2116RG	\$720	12
30"	HSS3010AA	\$712	94	TWILIGHT INFERNO				24"	WTS2418RG	\$834	15
36"	HSS3611AA	\$851	107	21"	TIS2106AA	\$489	37	30"	WTS3020RG	\$944	20
42"	HSS4212AA	\$1,068	139	24"	TIS2407AA	\$595	51	36"	WTS3622RG	\$991	21
48"	HSS4813AA	\$1,234	165	30"	TIS3008AA	\$732	59				
66"	HSS6613AA	\$1,590	227	36"	TIS3610AA	\$864	76				
MOUNTAIN TIMBER											
21"	MTS2105AA	\$723	62								
24"	MTS2406AA	\$848	74								
30"	MTS3006AA	\$955	77								
WESTERN PINE											
15"	WPS1504AA	\$193	20								
18"	WPS1805AA	\$294	28								
21"	WPS2106AA	\$388	38								
24"	WPS2407AA	\$528	54								
30"	WPS3008AA	\$672	67								
36"	WPS3609AA	\$858	88								
42"	WPS4209AA	\$1,087	118								
48"	WPS4809AA	\$1,182	128								



Classic Oak 24" Set



Blazing Pecan 24" Set



Canyon Timbers 24" Set

SINGLE SIDE - STANDARD SIZE VENTED BURNER KITS

RGA 2/72, ANSI Z.21-84 CERTIFIED

E-Burner and H-Burner kits require a minimum of 14" of depth.

Burner kits include: Burner, custom 5/8" grate, sand, or vermiculite, embers, volcanic cinder, fittings, and a black, non-whistling flex connector.

E-BURNER KITS - STANDARD

H-BURNER KITS - STANDARD

LOOSE LOG KIT SIZE	BURNER KIT NG MODEL #	EB KIT PRICE NATURAL GAS	WEIGHT LBS	EB KIT PRICE LP GAS	LOOSE LOG KIT SIZE	BURNER KIT NG MODEL #	HB KIT PRICE NATURAL GAS	WEIGHT LBS	HB KIT PRICE LP GAS
NO SAFETY PILOT - MATCH LIGHT					NO SAFETY PILOT - MATCH LIGHT				
15"	15RNEB0A5	\$277	29		18"-21"	18RNHB0A5	\$370	29	
18"-21"	18RNEB0A5	\$305	32	ORDER SAFETY PILOT AND CONVERSION KIT	24"	24RNHB0A5	\$400	32	ORDER SAFETY PILOT AND CONVERSION KIT
24"	24RNEB0A5	\$337	39		28"-30"	30RNHB0A5	\$451	39	
28"-30"	30RNEB0A5	\$387	40		36"	36RNHB0A5	\$561	53	
36"	36RNEB0A5	\$495	53						
42"-48"	42SNEB0A5	\$597	59	N/A					
60"	60SNEB0A5	\$1,111	126	N/A					
FACTORY INSTALLED SAFETY PILOT					FACTORY INSTALLED SAFETY PILOT				
15"	15RNEB(1B,1T)5	\$524	29	\$557	18"-21"	18RNHB(1B,1T)5	\$617	29	\$650
18"-21"	18RNEB(1B,1T)5	\$552	32	\$585	24"	24RNHB(1B,1T)5	\$647	32	\$680
24"	24RNEB(1B,1T)5	\$584	39	\$617	28"-30"	30RNHB(1B,1T)5	\$698	39	\$731
28"-30"	30RNEB(1B,1T)5	\$634	40	\$667	36"	36RNHB(1B,1T)5	\$808	53	\$841
36"	36RNEB(1B,1T)5	\$742	53	\$775					
42"-48"	42SNEB(1B,1T)5	\$844	59	N/A					
FACTORY INSTALLED LATCHTAP W/ ON/OFF REMOTE					FACTORY INSTALLED LATCHTAP W/ ON/OFF REMOTE				
15"	15RNEB1H5	\$918	29	\$951	18"-21"	18RNHB1H5	\$1,011	29	\$1,044
18"-21"	18RNEB1H5	\$946	32	\$979	24"	24RNHB1H5	\$1,041	32	\$1,074
24"	24RNEB1H5	\$978	39	\$1,011	28"-30"	30RNHB1H5	\$1,092	39	\$1,125
28"-30"	30RNEB1H5	\$1,028	40	\$1,061	36"	36RNHB1H5	\$1,202	59	\$1,235
36"	36RNEB1H5	\$1,136	53	\$1,169					
42"-48"	42SNEB1H5	\$1,238	59	N/A					
FACTORY INSTALLED PILOT W/ VARIABLE REMOTE					FACTORY INSTALLED PILOT W/ VARIABLE REMOTE				
15"	15RNEB1F5	\$1,016	29	\$1,049	18"-21"	18RNHB1F5	\$1,109	29	\$1,142
18"-21"	18RNEB1F5	\$1,044	32	\$1,077	24"	24RNHB1F5	\$1,139	32	\$1,172
24"	24RNEB1F5	\$1,076	39	\$1,109	28"-30"	30RNHB1F5	\$1,190	39	\$1,223
28"-30"	30RNEB1F5	\$1,126	40	\$1,159	36"	36RNHB1F5	\$1,300	53	\$1,333
36"	36RNEB1F5	\$1,234	53	\$1,267					
FACTORY INSTALLED MILLIVOLT PILOT W/ WALL SWITCH					FACTORY INSTALLED MILLIVOLT PILOT W/ WALL SWITCH				
15"	15RNEB2A5	\$887	29	\$920	18"-21"	18RNHB2A5	\$980	29	\$1,013
18"-21"	18RNEB2A5	\$915	32	\$948	24"	24RNHB2A5	\$1,010	32	\$1,043
24"	24RNEB2A5	\$947	39	\$980	28"-30"	30RNHB2A5	\$1,061	39	\$1,094
28"-30"	30RNEB2A5	\$997	40	\$1,030	36"	36RNHB2A5	\$1,171	53	\$1,204
36"	36RNEB2A5	\$1,105	59	\$1,138					
42"-48"	42SNEB2B5	\$1,207	59	N/A					
60"	60SNEB2B5	\$1,721	126	N/A					

INSTRUCTIONS FOR ORDERING PROPANE BURNER KITS

Specify if for Propane Gas by adding a "P" in the place of "N" to the model # (eg.18RPEB1B5)

42"+ Burner kits are NOT certified

SYSTEM 4 BURNER KITS - STANDARD - SPECIALIZED FOR LP GAS

ANSI Z21.60 CERTIFIED

LOOSE LOG KIT SIZE	BURNER KIT LP MODEL #	SF KIT PRICE LP GAS	WEIGHT LBS	LOOSE LOG KIT SIZE	BURNER KIT LP MODEL #	SF KIT PRICE LP GAS	WEIGHT LBS
FACTORY INSTALLED SAFETY PILOT				FACTORY INSTALLED LATCHTAP W/ ON/OFF REMOTE			
18"-21"	18CPSF(1B,1T)5CMT	\$797	32	18"-21"	18CPSF1H5CMT	\$1,191	29
24"	24CPSF(1B,1T)5CMT	\$834	39	24"	24CPSF1H5CMT	\$1,228	32
28"-30"	30CPSF(1B,1T)5CMT	\$871	40	28"-30"	30CPSF1H5CMT	\$1,265	36
36"	36CPSF(1B,1T)5CMT	\$1,363	40	36"	36CPSF1H5CMT	\$1,757	40
42"	42SPSF(1B,1T)5CMT	\$1,397	60	42"	42SPSF1H5CMT	\$1,791	60
FACTORY INSTALLED PILOT W/ VARIABLE REMOTE				FACTORY INSTALLED IPI W/ VARIABLE REMOTE			
18"-21"	18CPSF1F5CMT	\$1,289	29	18"-21"	18CPSF3K5CMT	\$1,504	32
24"	24CPSF1F5CMT	\$1,326	32	24"	24CPSF3K5CMT	\$1,541	39
28"-30"	30CPSF1F5CMT	\$1,363	36	28"-30"	30CPSF3K5CMT	\$1,578	40
36"	36CPSF1F5CMT	\$1,855	40	36"	36CPSF3K5CMT	\$2,070	40
42"	42SPSF1F5CMT	\$1,889	60				

Burner kits include: Burner, custom 5/8" grate, embers, volcanic cinder, fittings, and a black, non-whistling flex connector.

System 4 Burner kits require a minimum of 16" of depth.

SAFETY PILOT REMOTE CONTROL UPGRADE KITS FOR 1T MODELS

MODEL #	PRICE	WEIGHT	DESCRIPTION
AF-LCK	\$328	1	Latch-Tap Kit (ON/OFF) for AF-CMT-PO with RC-S6V-LT Remote Control Included
AF-SCK	\$372	1	Variable Flame Height for AF-CMT-PO with RC-S6V-ST Remote Control Included

SINGLE SIDE - VENTED LOOSE LOGS

*WHEN ORDERING A FULL SET, CHOOSE A LOOSE LOG KIT AND MATCH IT WITH A BURNER KIT ON THE NEXT PAGE
 FRESH CUT AND CHARRED SERIES ARE REFRACTORY CONCRETE LOGS
 RADIANT HEAT SERIES ARE CERAMIC FIBER LOGS

LOGS

SET	LOOSE LOG	LOOSE LOG	WEIGHT	SET	LOOSE LOG	LOOSE LOG	WEIGHT	SET	LOOSE LOG	LOOSE LOG	WEIGHT
SIZE	MODEL #	PRICE	LBS	SIZE	MODEL #	PRICE	LBS	SIZE	MODEL #	PRICE	LBS
FRESH CUT SERIES				CHARRED SERIES				RADIANT HEAT SERIES			
CLASSIC OAK				BLAZING PECAN				ASPEN TIMBERS			
15"	CLS1504AA	\$120	16	18"	BPS1804AA	\$359	40	21"	ATS2113RG	\$858	12
18"	CLS1805AA	\$213	32	21"	BPS2104AA	\$479	44	24"	ATS2414RG	\$967	15
21"	CLS2105AA	\$244	41	24"	BPS2405AA	\$582	61	30"	ATS3015RG	\$1,077	21
24"	CLS2406AA	\$268	44	30"	BPS3006AA	\$667	68	36"	ATS3616RG	\$1,136	22
30"	CLS3007AA	\$369	58	INFERNO SERIES				CANYON TIMBERS			
DRIFTWOOD				18"	ISS1805AA	\$294	23	21"	CYS2113RG	\$709	12
18"	DRS1805AA	\$228	28	21"	ISS2106AA	\$353	29	24"	CYS2416RG	\$820	15
24"	DRS2406AA	\$285	32	24"	ISS2406AA	\$542	43	30"	CYS3017RG	\$933	20
28"	DRS2807AA	\$397	44	30"	ISS3007AA	\$686	45	36"	CYS3619RG	\$974	61
GRAND OAK				MAGNIFICENT INFERNO				CROSS TIMBERS			
18"	GOS1805AA	\$291	38	21"	MIS2106AA	\$450	41	21"	CTS2108RG	\$622	12
21"	GOS2105AA	\$342	46	24"	MIS2407AA	\$555	50	24"	CTS2409RG	\$728	15
24"	GOS2406AA	\$447	68	30"	MIS3008AA	\$694	62	30"	CTS3010RG	\$841	20
30"	GOS3007AA	\$577	93	36"	MIS3610AA	\$796	75	36"	CTS3611RG	\$914	21
36"	GOS3608AA	\$704	103	SUPREME PONDEROSA				RUSTIC TIMBERS			
HARGROVE SELECT				24"	SPS2407AA	\$712	75	21"	RTS2110RG	\$674	11
18"	HSS1807AA	\$332	41	30"	SPS3008AA	\$934	111	24"	RTS2411RG	\$764	14
21"	HSS2108AA	\$447	54	36"	SPS3609AA	\$1,178	132	30"	RTS3012RG	\$875	16
24"	HSS2409AA	\$577	69	TWILIGHT INFERNO				36"	RTS3614RG	\$930	18
30"	HSS3010AA	\$712	94	21"	TIS2106AA	\$489	37	WOODLAND TIMBERS			
36"	HSS3611AA	\$851	107	24"	TIS2407AA	\$595	51	21"	WTS2116RG	\$720	12
MOUNTAIN TIMBER				30"	TIS3008AA	\$732	59	24"	WTS2418RG	\$834	15
21"	MTS2105AA	\$723	62	36"	TIS3610AA	\$864	76	30"	WTS3020RG	\$944	20
24"	MTS2406AA	\$848	74								
30"	MTS3006AA	\$955	77								
WESTERN PINE											
15"	WPS1504AA	\$193	20								
18"	WPS1805AA	\$294	28								
21"	WPS2106AA	\$388	38								
24"	WPS2407AA	\$528	54								
30"	WPS3008AA	\$672	67								
36"	WPS3609AA	\$858	88								



Classic Oak 24" Set



Blazing Pecan 24" Set



Canyon Timbers 24" Set

SINGLE SIDE - VENTED BURNER

ANSI Z.21-60 CERTIFIED

Burner kits include: HC Burner, custom 5/8" grate, sand or vermiculite, embers, volcanic cinder, fittings, and black non-whistling flex connector

Hidden Control kits require a minimum of 14" depth

HIDDEN CONTROL BURNER KITS

LOOSE LOG KIT SIZE	BURNER KIT NG MODEL #	HC KIT PRICE NATURAL GAS	WEIGHT LBS	HC KIT PRICE LP GAS
FACTORY INSTALLED SAFETY PILOT				
18"-21"	18CNHC1T5	\$738	29	\$771
24"	24CNHC1T5	\$770	32	\$803
28"-30"	30CNHC1T5	\$821	39	\$854
36"	36CNHC1T5	\$942	53	\$975
FACTORY INSTALLED VARIABLE FLAME WITH REMOTE				
18"-21"	18CNHC1F5	\$1,230	29	\$1,263
24"	24CNHC1F5	\$1,262	32	\$1,295
28"-30"	30CNHC1F5	\$1,313	39	\$1,346
36"	36CNHC1F5	\$1,434	53	\$1,467
FACTORY INSTALLED ELECTRONIC IGNITION WITH VARIABLE REMOTE				
18"-21"	18CNHC3F5 (BT)	\$1,408	29	\$1,441
24"	24CNHC3F5 (BT)	\$1,440	32	\$1,473
28"-30"	30CNHC3F5 (BT)	\$1,491	39	\$1,524
36"	36CNHC3F5 (BT)	\$1,612	53	\$1,645

INSTRUCTIONS FOR ORDERING PROPANE BURNER KITS

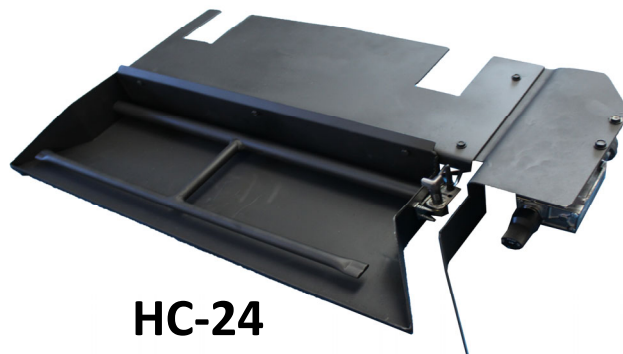
Specify if for Propane Gas by adding a "P" in the place of "N" to the model # (eg.24CPHC1T5)

BLUETOOTH SMART RECEIVER

Specify Bluetooth capability by adding "BT" to the end of the model #. Add \$260 to price.

SAFETY PILOT REMOTE CONTROL UPGRADE KITS FOR 1T MODELS

MODEL #	PRICE	WEIGHT	DESCRIPTION
AF-LCK	\$328	1	Latch-Tap Kit (ON/OFF) for AF-CMT-PO with RC-S6V-LT Remote Control Included
AF-SCK	\$372	1	Variable Flame Height for AF-CMT-PO with RC-S6V-ST Remote Control Included



HC-24

SINGLE SIDE - LARGE VENTED LOG SETS

WHEN ORDERING A FULL SET, CHOOSE A LOOSE LOG KIT AND MATCH IT WITH THE EMBER SUPREME BURNER KIT
 Mountain Timber sets 30" and larger feature the Ember Supreme (ES) burner system, with a larger deeper single burner pan and a deeper grate to give you more flame than standard burner systems.

MOUNTAIN TIMBER

LOGS - LARGE

SET SIZE	LOOSE LOG MODEL #	LOOSE LOG PRICE	WEIGHT LBS
MOUNTAIN TIMBER			
30"	MTS3007AA	\$1,161	94
36"	MTS3608AA	\$1,510	124
42"	MTS4208AA	\$2,118	173
48"	MTS4809AA	\$2,328	190
60"	MTS6010AA	\$2,487	200

BURNER KITS - LARGE

LOOSE LOG KIT SIZE	BURNER KIT NG MODEL #	ES KIT PRICE NATURAL GAS	WEIGHT LBS	ES KIT PRICE LP GAS
NO SAFETY PILOT - MATCH LIGHT				
30"	30SNES0A3	\$1,077	65	N/A
36"	36SNES0A3	\$1,168	79	N/A
42"-48"	42SNES0A3	\$1,304	95	N/A
60"	60SNES0A3	\$1,451	138	N/A
FACTORY INSTALLED SAFETY PILOT				
30"	30SNES1B3	\$1,324	65	N/A
36"	36SNES1B3	\$1,415	79	N/A
FACTORY INSTALLED HI CAP MILLIVOLT PILOT W/ WALL SWITCH				
30"	30SNES2B3	\$1,926	65	N/A
36"	36SNES2B3	\$2,017	79	N/A
42"-48"	42SNES2B3	\$2,153	95	N/A
60"	60SNES2B3	\$2,300	138	N/A

EMBER SUPREME BURNER KITS ARE NOT OFFERED IN LIQUID PROPANE APPLICATIONS



SINGLE SIDE - LARGE VENTED LOG SETS

WHEN ORDERING A FULL SET, CHOOSE A DOUBLE STACK LOOSE LOG KIT AND MATCH IT WITH A DOUBLE STACK BURNER KIT
 WHEN ORDERING A TRIPLE STACK SET, CHOOSE BOTH A DOUBLE STACK AND TRIPLE STACK LOG SET, THEN CHOOSE A
 DOUBLE STACK AND TRIPLE STACK BURNER KIT.

KODIAK BURNER KITS INCLUDE: CUSTOM BURNER/GRATE SYSTEM, SAND, EMBERS, VOLCANIC CINDER, FITTINGS AND FLEX CONNECTOR

DOUBLE STACK

18"-36" sets: 15" Depth Required 48"-60" sets: 21" Depth Required

LOGS - LARGE

SET SIZE	LOOSE LOG MODEL #	LOOSE LOG PRICE	LOOSE LOG WEIGHT LBS
DOUBLE STACK			
KODIAK CHAR			
21"	KCS2108DS	\$731	87
24"	KCS2409DS	\$825	92
30"	KCS3010DS	\$1,165	135
36"	KCS3611DS	\$1,374	162
48"	KCS4814DS	\$1,813	224
60"	KCS6016DS	\$2,094	244
KODIAK SPLIT			
21"	KSS2107DS	\$769	96
24"	KSS2408DS	\$829	103
30"	KSS3009DS	\$960	116
36"	KSS3612DS	\$1,687	253
48"	KSS4812DS	\$1,964	304
60"	KSS6014DS	\$2,485	356
KODIAK TIMBERS			
21"	KTS2116DS	\$800	25
24"	KTS2418DS	\$934	27
30"	KTS3020DS	\$1,263	30
36"	KTS3622DS	\$1,459	35

ANSI Certified



Kodiak Char Double Stack

LOGS - LARGE

SET SIZE	LOOSE LOG MODEL #	LOOSE LOG PRICE	LOOSE LOG WEIGHT LBS
TRIPLE STACK			
KODIAK CHAR			
30"	KCS3003TS	\$372	58
36"	KCS3604TS	\$620	86
48"	KCS4804TS	\$681	111
60"	KCS6004TS	\$753	126
KODIAK SPLIT			
30"	KSS3003TS	\$450	61
36"	KSS3603TS	\$492	75
48"	KSS4804TS	\$718	110
60"	KSS6004TS	\$750	120



Kodiak Char Triple Stack

BURNER KITS - LARGE

LOOSE LOG KIT SIZE	BURNER KIT NG MODEL #	DS KIT PRICE NATURAL GAS	WEIGHT LBS	DS KIT PRICE LP GAS
NO SAFETY PILOT - MATCH LIGHT				
18"	18SNDS0A8	\$695	57	N/A
24"	24SNDS0A8	\$764	57	N/A
30"	30SNDS0A8	\$834	62	N/A
36"	36SNDS0A8	\$903	67	N/A
48"	48SNDS0A8	\$1,666	76	N/A
60"	60SNDS0A8	\$2,083	85	N/A
FACTORY INSTALLED PILOT WITH VARIABLE REMOTE				
18"	18CNDS1F8	\$1,448	57	\$1,481
24"	24CNDS1F8	\$1,517	57	\$1,550
30"	30CNDS1F8	\$1,587	62	\$1,620
36"	36CNDS1F8	\$1,656	67	\$1,689
FACTORY INSTALLED HI CAP MILLIVOLT PILOT W/ WALL SWITCH				
24"	24SNDS2B8	\$1,613	60	\$1,646
30"	30SNDS2B8	\$1,683	65	\$1,716
36"	36SNDS2B8	\$1,752	70	\$1,785
48"	48SNDS2B8	\$2,515	79	N/A
60"	60SNDS2B8	\$2,932	88	N/A

INSTRUCTIONS FOR ORDERING PROPANE BURNER KITS

Specify if for Propane Gas by adding a "P" in the place of "N" to the model # (eg. 36SPDS2B8) - ONLY AVAILABLE IN 18"- 36"

Kodiak Split logs are not recommended for propane applications

TRIPLE STACK

Triple Stack kits are add-on kits

18"-36" sets: 25" Depth Required 48"-60" sets: 31" Depth Required

BURNER KITS - LARGE

LOOSE LOG KIT SIZE	BURNER KIT NG MODEL #	TS KIT PRICE NATURAL GAS	WEIGHT LBS	TS KIT PRICE LP GAS
NO SAFETY PILOT - MATCH LIGHT				
30"	30SNTS0A5	\$595	22	N/A
36"	36SNTS0A5	\$686	25	N/A
48"	48SNTS0A5	\$839	27	N/A
60"	60SNTS0A5	\$1,011	29	N/A
FACTORY INSTALLED MILLIVOLT PILOT W/ WALL SWITCH				
30"	30SNTS2A5	\$1,444	25	\$1,477
36"	36SNTS2A5	\$1,535	29	\$1,568
48"	48SNTS2A5	\$1,688	30	N/A
60"	60SNTS2A5	\$1,860	32	N/A

INSTRUCTIONS FOR ORDERING PROPANE BURNER KITS

Specify if for Propane Gas by adding a "P" in the place of "N" to the model # (eg. 36SPDS2B8) - ONLY AVAILABLE IN 30"- 36"

Kodiak Split logs are not recommended for propane applications

SEE THRU - VENTED LOG SETS

RGA 2/72, ANSI Z.21-84 CERTIFIED

WHEN ORDERING A FULL SET, CHOOSE A SEE THRU LOOSE LOG KIT AND MATCH IT WITH THE SEE THRU BURNER KIT 18" deep grate with ST burner. For full size see thru, three sided and corner applications. Sets need 22" of depth. See Thru burner kits include: ST burner and custom grate, sand or vermiculite, embers, volcanic cinder, fittings and non-whistling connector.

ST - LOGS

SET SIZE	LOOSE LOG MODEL #	LOOSE LOG PRICE	WEIGHT LBS
SEE THRU LOGS			
ASPEN TIMBERS			
21"	ATS2120ST	\$1,272	17
24"	ATS2421ST	\$1,380	19
30"	ATS3022ST	\$1,471	23
36"	ATS3623ST	\$1,560	26
CLASSIC OAK			
18"	CLS1806ST	\$289	42
21"	CLS2106ST	\$338	58
24"	CLS2407ST	\$422	64
30"	CLS3008ST	\$538	93
CROSS TIMBERS			
21"	CTS2113ST	\$920	21
24"	CTS2416ST	\$1,141	24
30"	CTS3017ST	\$1,264	29
36"	CTS3618ST	\$1,357	31
DRIFTWOOD			
18"	DRS1806ST	\$310	39
24"	DRS2407ST	\$452	44
28"	DRS2808ST	\$575	64
GRAND OAK			
18"	GOS1806ST	\$405	62
21"	GOS2106ST	\$471	69
24"	GOS2407ST	\$616	96
30"	GOS3008ST	\$794	132
36"	GOS3610ST	\$1,025	175
HARGROVE SELECT			
18"	HSS1808ST	\$440	62
21"	HSS2109ST	\$595	69
24"	HSS2410ST	\$746	96
30"	HSS3011ST	\$922	132
36"	HSS3612ST	\$1,095	175
INFERNO SERIES			
21"	ISS2110ST	\$575	44
24"	ISS2410ST	\$784	58
30"	ISS3011ST	\$916	71
MAGNIFICENT INFERNO			
21"	MIS2108ST	\$573	53
24"	MIS2409ST	\$744	64
30"	MIS3010ST	\$864	79
36"	MIS3613ST	\$1,089	99
RUSTIC TIMBERS			
21"	RTS2118ST	\$1,044	17
24"	RTS2418ST	\$1,118	20
30"	RTS3021ST	\$1,278	23
36"	RTS3622ST	\$1,371	25
SUPREME PONDEROSA			
24"	SPS2410ST	\$1,040	110
30"	SPS3011ST	\$1,288	158
36"	SPS3612ST	\$1,578	182
42"	SPS4214ST	\$1,907	224
48"	SPS4814ST	\$1,947	235

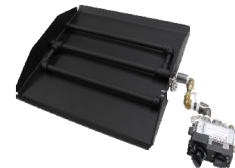
ST-BURNER KITS

LOOSE LOG KIT SIZE	BURNER KIT NG MODEL #	ST KIT PRICE NATURAL GAS	WEIGHT LBS	ST KIT PRICE LP GAS
NO SAFETY PILOT - MATCH LIGHT				
18"-21"	18RNST0A5	\$472	47	N/A
24"	24RNST0A5	\$540	54	N/A
30"	30RNST0A5	\$607	61	N/A
36"	36SNST0A5	\$811	88	N/A
42"	42SNST0A5	\$887	112	N/A
FACTORY INSTALLED SAFETY PILOT				
18"-21"	18RNST(1B,1T)5	\$719	47	\$752
24"	24RNST(1B,1T)5	\$787	54	\$820
30"	30RNST(1B,1T)5	\$854	61	\$887
36"	36SNST(1B,1T)5	\$1,058	88	\$1,338
FACTORY INSTALLED LATCHTAP W/ ON/OFF REMOTE				
18"-21"	18RNST1H5	\$1,116	47	\$1,149
24"	24RNST1H5	\$1,184	54	\$1,217
30"	30RNST1H5	\$1,251	61	\$1,284
36"	36SNST1H5	\$1,455	88	\$1,704
FACTORY INSTALLED VARIABLE FLAME W/ REMOTE				
18"-21"	18RNST1F5	\$1,211	47	\$1,244
24"	24RNST1F5	\$1,279	54	\$1,312
30"	30RNST1F5	\$1,346	61	\$1,379
36"	36SNST1F5	\$1,550	88	\$2,322
FACTORY INSTALLED MILLIVOLT PILOT W/ WALL SWITCH				
18"-21"	18RNST2A5	\$1,082	47	\$1,115
24"	24RNST2A5	\$1,150	54	\$1,183
30"	30RNST2A5	\$1,217	61	\$1,250
36"	36SNST2A5	\$1,421	88	\$2,064

36 BURNER KITS ARE NOT CERTIFIED

INSTRUCTIONS FOR ORDERING PROPANE BURNER KITS

Specify if for Propane Gas by adding a "P" in the place of "N" to the model # (eg24RPST1H5)



See Thru Burner

SET SIZE	LOOSE LOG MODEL #	LOOSE LOG PRICE	WEIGHT LBS
SEE THRU LOGS			
WESTERN PINE			
18"	WPS1806ST	\$435	45
21"	WPS2107ST	\$527	56
24"	WPS2409ST	\$723	71
30"	WPS3009ST	\$915	93
36"	WPS3610ST	\$1,138	169
WOODLAND TIMBERS			
21"	WTS2127ST	\$1,116	17
24"	WTS2428ST	\$1,229	20
30"	WTS3029ST	\$1,327	23
36"	WTS3633ST	\$1,440	25

SAFETY PILOT REMOTE CONTROL UPGRADE KITS FOR 1T MODELS

MODEL #	PRICE	WEIGHT	DESCRIPTION
AF-LCK	\$328	1	Latch-Tap Kit (ON/OFF) for AF-CMT-PO with RC-S6V-LT Remote Control Included
AF-SCK	\$372	1	Variable Flame Height for AF-CMT-PO with RC-S6V-ST Remote Control Included

SEE THRU SHALLOW - VENTED LOG SETS

RG A 2/72, ANSI Z.21-84 CERTIFIED

WHEN ORDERING A FULL SET, CHOOSE A SEE THRU SHALLOW LOOSE LOG KIT AND MATCH IT WITH THE SEE THRU SHALLOW BURNER KIT 12" deep grate with SS burner. For full size see thru, three sided and corner applications. Sets need 17" of depth. See Thru Shallow burner kits include: SS burner and custom grate, sand or vermiculite, embers, volcanic cinder, fittings and non whistling connector

SS - LOGS

SET SIZE	LOOSE LOG MODEL #	LOOSE LOG PRICE	WEIGHT LBS
SEE THRU LOGS			
ASPEN TIMBERS			
21"	ATS2118SS	\$983	15
24"	ATS2419SS	\$1,075	17
30"	ATS3020SS	\$1,126	21
CLASSIC OAK			
18"	CLS1805SS	\$238	40
21"	CLS2105SS	\$283	52
24"	CLS2406SS	\$314	56
30"	CLS3007SS	\$411	68
CROSS TIMBERS			
21"	CTS2111SS	\$778	16
24"	CTS2412SS	\$870	20
30"	CTS3013SS	\$954	24
GRAND OAK			
18"	GOS1805SS	\$308	49
21"	GOS2105SS	\$404	54
24"	GOS2406SS	\$498	82
30"	GOS3007SS	\$659	115
INFERNO SERIES			
21"	ISS2109SS	\$520	39
24"	ISS2409SS	\$728	53
30"	ISS3010SS	\$867	66
MAGNIFICENT INFERNO			
21"	MIS2107SS	\$492	38
24"	MIS2408SS	\$603	45
30"	MIS3009SS	\$728	57
WESTERN PINE			
18"	WPS1805SS	\$345	40
21"	WPS2105SS	\$442	52
24"	WPS2407SS	\$609	68
30"	WPS3008SS	\$762	87
WOODLAND TIMBERS			
21"	WTS2118SS	\$831	11
24"	WTS2419SS	\$920	13
30"	WTS3020SS	\$1,017	15

SS-BURNER KITS

LOOSE LOG KIT SIZE	BURNER KIT NG MODEL #	SS KIT PRICE NATURAL GAS	WEIGHT LBS	SS KIT PRICE LP GAS
NO SAFETY PILOT - MATCH LIGHT				
18"	18RNSS0A5	\$434	43	N/A
24"	24RNSS0A5	\$493	50	N/A
30"	30RNSS0A5	\$560	58	N/A
FACTORY INSTALLED SAFETY PILOT				
18"	18RNSS(1B,1T)5	\$648	43	\$681
24"	24RNSS(1B,1T)5	\$707	50	\$740
30"	30RNSS(1B,1T)5	\$774	58	\$807
FACTORY INSTALLED LATCHTAP W/ ON/OFF REMOTE				
18"	18RNSS1H5	\$1,045	43	\$1,078
24"	24RNSS1H5	\$1,104	50	\$1,137
30"	30RNSS1H5	\$1,171	58	\$1,204
FACTORY INSTALLED VARIABLE FLAME W/ REMOTE				
18"	18RNSS1F5	\$1,140	43	\$1,173
24"	24RNSS1F5	\$1,199	50	\$1,232
30"	30RNSS1F5	\$1,266	58	\$1,299
FACTORY INSTALLED MILLIVOLT PILOT W/ WALL SWITCH				
18"	18RNSS2A5	\$1,011	43	\$1,044
24"	24RNSS2A5	\$1,070	50	\$1,103
30"	30RNSS2A5	\$1,137	58	\$1,170

INSTRUCTIONS FOR ORDERING PROPANE BURNER KITS

Specify if for Propane Gas by adding a "P" in the place of "N" to the model #(eg24RPSS1H5)

SYSTEM 4 SS-BURNER KITS

LOOSE LOG KIT SIZE	BURNER KIT NG MODEL #	SS KIT PRICE LP GAS	WEIGHT LBS
FACTORY INSTALLED SAFETY PILOT			
18"	18SPSS1B1SFCMT	\$1,165	40
24"	24SPSS1B1SFCMT	\$1,208	44
30"	30SPSS1B1SFCMT	\$1,276	50
36"	36SPST1B5SFCMT	\$2,073	58
FACTORY INSTALLED LATCHTAP W/ ON/OFF REMOTE			
18"	18SPSS1H1SFCMT	\$1,559	40
24"	24SPSS1H1SFCMT	\$1,602	44
30"	30SPSS1H1SFCMT	\$1,670	50
36"	36SPST1H1SFCMT	\$2,467	58
FACTORY INSTALLED VARIABLE FLAME W/ REMOTE			
18"	18SPSS1F5SFCMT	\$1,657	43
24"	24SPSS1F5SFCMT	\$1,700	50
30"	30SPSS1F5SFCMT	\$1,768	58
36"	36SPST1F1SFCMT	\$2,565	58

Order ST logs for the 36" System 4

SAFETY PILOT REMOTE CONTROL UPGRADE KITS FOR 1T MODELS

MODEL #	PRICE	WEIGHT	DESCRIPTION
AF-LCK	\$328	1	Latch-Tap Kit (ON/OFF) for AF-CMT-PO with RC-S6V-LT Remote Control Included
AF-SCK	\$372	1	Variable Flame Height for AF-CMT-PO with RC-S6V-ST Remote Control Included

FULL PAN VENTED LOOSE LOGS & BURNER KITS

WHEN ORDERING A FULL PAN SET, CHOOSE A LOOSE LOG SET OR SPECIAL SHAPE KIT AND MATCH IT WITH AN ACCESSORY KIT

For use in standard, see thru, three sided, or corner fireplaces. The size of the set references the size of the burner.

The largest logs are slightly shorter than the burner. Needs a minimum of 14" depth.

FULL PAN - LOGS

SET SIZE	LOOSE LOG MODEL #	LOOSE LOG PRICE	WEIGHT LBS
LOGS			
OAK			
18"	OOS1805FP	\$264	38
24"	OOS2406FP	\$367	52
30"	OOS3007FP	\$493	69
WESTERN PINE			
18"	WPS1805FP	\$344	40
24"	WPS2407FP	\$540	62
30"	WPS3008FP	\$762	85
DRIFTWOOD			
18"	DRS1805FP	\$228	28
24"	DRS2406FP	\$285	32
28"	DRS2807FP	\$397	44



FULL PAN - BURNER KITS

LOOSE LOG KIT SIZE	BURNER KIT NG MODEL #	FP PRICE NATURAL GAS	WEIGHT LBS	FP PRICE LP GAS
NO SAFETY PILOT - MATCH LIGHT				
18"-21"	18SNFP0A0	\$298	35	N/A
24"	24SNFP0A0	\$343	45	N/A
28"-30"	30SNFP0A0	\$380	52	N/A
FACTORY INSTALLED SAFETY PILOT				
18"-21"	18SNFP1B0	\$545	35	\$578
24"	24SNFP1B0	\$590	45	\$623
30"	30SNFP1B0	\$627	52	\$660
FACTORY INSTALLED LATCHTAP PILOT W/REMOTE CONTROL				
18"-21"	18SNFP1H0	\$942	35	\$975
24"	24SNFP1H0	\$987	45	\$1,020
28"-30"	30SNFP1H0	\$1,024	52	\$1,057
FACTORY INSTALLED VARIABLE FLAME W/REMOTE CONTROL				
18"-21"	18SNFP1F0	\$1,037	35	\$1,070
24"	24SNFP1F0	\$1,082	45	\$1,115
28"-30"	30SNFP1F0	\$1,119	52	\$1,152
FACTORY INSTALLED MILLIVOLT PILOT W/WALL SWITCH				
18"-21"	18SNFP2A0	\$908	35	\$941
24"	24SNFP2A0	\$953	45	\$986
28"-30"	30SNFP2A0	\$990	52	\$1,023

INSTRUCTIONS FOR ORDERING PROPANE BURNER KITS

Specify if for Propane Gas by adding a "P" in the place of "N" to the model # (eg. 24SPFP1B0)



FULL PAN BURNER

OPTIONAL PEDESTAL GRATE FACING

MODEL #	PRICE	WEIGHT LBS	DESCRIPTION
PEDESTAL GRATE FACINGS			
PGF-18	\$62	5	Cast iron facing for 18"-21" vented sets
PGF-FP-KIT	\$9	1	PGF Hanger Kit - 2 hangers for PGF on Full Pan set

FULL PAN SPECIALTY SHAPES

WHEN ORDERING A FULL PAN SPECIALTY SHAPE SET, CHOOSE A SET ON THIS PAGE AND MATCH IT WITH AN ACCESSORY KIT FROM PAGE 10

For use in standard, see thru, three sided, or corner fireplaces. The size of the set references the size of the burner.

The combinations of pieces are slightly shorter than the burner

COLONIAL CANNON BALLS - SETS

MODEL #	DESCRIPTION	PRICE	WEIGHT	PIECES
FCBS1820FPBL	4" diameter ball set - Black	\$289	9	20
FCBS1820FPBG	4" diameter ball set - Beige	\$289	9	20
FCBS1820FPBR	4" diameter ball set - Brown	\$289	9	20
FCBS2432FPBL	4" diameter ball set - Black	\$460	14	32
FCBS2432FPBG	4" diameter ball set - Beige	\$460	14	32
FCBS2432FPBR	4" diameter ball set - Brown	\$460	14	32
FCBS3038FPBL	4" diameter ball set - Black	\$550	17	38
FCBS3038FPBG	4" diameter ball set - Beige	\$550	17	38
FCBS3038FPBR	4" diameter ball set - Brown	\$550	17	38

CANNON BALLS
AND RIVER
STONES MADE IN
CERAMIC FIBER

COLONIAL CANNON BALLS - INDIVIDUAL SHAPES

MODEL #	DESCRIPTION	PRICE	WEIGHT
F7004BL	4" diameter ball - Black	\$21	0.5
F7004BG	4" diameter ball - Beige	\$21	0.5
F7004BR	4" diameter ball - Brown	\$21	0.5



**FULL PAN
WITH CANNON BALLS**

BLAZING RIVER STONES - SETS

MODEL #	DESCRIPTION	PRICE	WEIGHT	PIECES
FRR7FPBL	Covers .5 square feet -Black	\$75	1.25	7
FRR7FPBG	Covers .5 square feet -Beige	\$75	1.25	7
FRR7FPBR	Covers .5 square feet -Brown	\$75	1.25	7

Suggested Coverage for Blazing River Stones

- 4 sets for an 18" application
- 6 sets for a 24" application
- 8 sets for a 30" application
- Mix colors as desired.



**FULL PAN
WITH RIVER STONES**

BURNER MEDIA OPTIONS

REFLECTIVE FIREGLASS 1/2"

MODEL #	DESCRIPTION	PRICE	WEIGHT
H-BLR-10	Blue Lagoon 1/2" Fireglass (10 lb bag)	\$92	10
H-BR-10	Bronze 1/2" Fireglass (10 lb bag)	\$92	10
H-CI-10	Crystal Ice 1/2" Fireglass (10 lb bag)	\$92	10
H-MBR-10	Midnight Black 1/2" Fireglass (10 lb bag)	\$92	10
H-PR-10	Platinum Reflective 1/2" Fireglass (10 lb bag)	\$92	10

VOLCANIC FIREPIT CINDER

MODEL #	DESCRIPTION	PRICE	WEIGHT
VC	3/8" Volcanic Cinder Bag	\$25	5
VCFP-L	1" to 3" Volcanic Cinder - 5 gal. bucket - 1 cubic ft.	\$92	30
VCFP-S	3/8" Volcanic Cinder - 5 gal. bucket - 1 cubic ft.	\$106	35

FIREGLASS BURNER KITS NON-CERTIFIED BURNER KITS STAINLESS STEEL S BURNER

BURNER KIT NG MODEL #	DESCRIPTION	SB KIT PRICE NATURAL GAS	WEIGHT LBS	SB KIT PRICE LP GAS
NO SAFETY PILOT - MATCH LIGHT				
18SNSBOAO	18" S Burner kit	\$451	27	N/A
24SNSBOAO	24" S Burner kit	\$623	30	N/A
30SNSBOAO	30" S Burner kit	\$709	48	N/A
FACTORY INSTALLED WITH SAFETY PILOT				
18SNSB1BO	18" S Burner Accessory kit with Safety Pilot	\$665	27	\$698
24SNSB1BO	24" S Burner Accessory kit with Safety Pilot	\$837	30	\$870
30SNSB1BO	30" S Burner Accessory kit with Safety Pilot	\$923	48	\$956

GLASS H-TUBE

BURNER KIT NG MODEL #	DESCRIPTION	HT KIT PRICE NATURAL GAS	WEIGHT LBS	HT KIT PRICE LP GAS
NATURAL GAS ONLY				
18SNHTOAO	18" H-Tube Accessory kit - matchlight	\$292	22	N/A
24SNHTOAO	24" H-Tube Accessory kit - matchlight	\$313	24	N/A
30SNHTOAO	30" H-Tube Accessory kit - matchlight	\$334	41	N/A
36SNHTOAO	36" H-Tube Accessory kit - matchlight	\$355	43	N/A

INSTRUCTIONS FOR ORDERING PROPANE BURNER KITS

Specify if for Propane Gas by adding a "P" in the place of "N" to the model # (eg. 24SPSB1B0)

NG Glass S-burner kits include: sand, cinder, black, non-whistling flex connector, and fittings. (LP kits come with cinder only)

DIMENSIONS OF GLASS BURNERS

MODEL #	LENGTH	DEPTH	DESCRIPTION
STAINLESS STEEL EMBER BURNER			
SEB14	14	6	18"-21" SETS
SEB18	18	6	24" SETS
SEB22	22.5	6	30" SETS
SEB26	26	6	36" SETS
STAINLESS STEEL S BURNER			
SSSB18	16.5	14	18" SETS
SSSB24	22.5	14	24" SETS
SSSB30	28	14	30" SETS
GLASS H-TUBE			
SSHT18	18	6	18" SETS
SSHT24	24	6	24" SETS
SSHT30	30	6	30" SETS
SSHT36	36	6	36" SETS

OUTDOOR LOG BURNER KIT STAINLESS STEEL GAS LOG BURNER KIT

MODEL #	DESCRIPTION	PRICE	WEIGHT (LBS)
18SNSK0A5	18" Stainless Steel Log Accessory kit for NG - matchlight	\$892	50
24SNSK0A5	24" Stainless Steel Log Accessory kit for NG - matchlight	\$970	75
30SNSK0A5	30" Stainless Steel Log Accessory kit for NG - matchlight	\$1,039	85
36SNSK0A5	36" Stainless Steel Log Accessory kit for NG - matchlight	\$1,100	95

Stainless steel accessory kits include: burner pan, grate, large and small cinder, fittings, and flex connector

FIREPIT BURNER KITS

FIRE RING BURNERS ONLY

MODEL #	DESCRIPTION	PRICE	WEIGHT (LBS)
SSFRB18	18" Stainless Steel Fire Ring burner only	\$286	4
SSFRB24	24" Stainless Steel Fire Ring burner only	\$365	5
SSFRB30	30" Stainless Steel Fire Ring burner only	\$427	6
SSFRB36	36" Stainless Steel Fire Ring burner only	\$578	7

FIRE RING KITS (BURNER, VALVES, FITTINGS, CONNECTORS, AND VOLCANIC CINDER)

MODEL #	DESCRIPTION	PRICE	WEIGHT (LBS)
18SSFRBA0	18" Stainless Steel Fire Ring burner kit with 25 lbs cinder and fittings	\$662	30
24SSFRBA0	24" Stainless Steel Fire Ring burner kit with 25 lbs cinder and fittings	\$741	32
30SSFRBA0	30" Stainless Steel Fire Ring burner kit with 50 lbs cinder and fittings	\$895	60
36SSFRBA0	36" Stainless Steel Fire Ring burner kit with 50 lbs cinder and fittings	\$1,046	62

DROP-IN STYLE OUTDOOR FIRE PIT BURNER KIT

MODEL #	DESCRIPTION	PRICE	WEIGHT (LBS)
FPTB22	Stainless steel, drop-in type firepit burner, hoses and key valve included, For NG & LP.	\$672	12

Use 30 lbs of glass or 25 lbs of volcanic cinder to fill the burner.

RUGGED CRAFT METAL LOGS

MODEL #	DESCRIPTION	PRICE	WEIGHT (LBS)
RCS1805	18" Rugged Craft Loose Logs	\$1,060	25
RCS2406	24" Rugged Craft Loose Logs	\$1,359	31
RCS3007	30" Rugged Craft Loose Logs	\$1,633	37
RCS3608	36" Rugged Craft Loose Logs	\$1,904	47

Rugged craft logs can be arranged in either a firepit stack or placed on a grate and stacked as a typical log set



Rugged Craft 24" Firepit Stack



Rugged Craft 24" Log Set

OUTDOOR FIREPIT LOGS

WILDERNESS SERIES OUTDOOR FIREPIT LOGS

Outdoor firepit log stacks are for use with common ring-type burners. 20" sizes are designed to fit 18" to 24" firepit applications.

30" sizes are designed to fit 20" to 40" firepit applications. 50" sizes are designed to fit 40" to 60" firepit applications.

MODEL #	DESCRIPTION	PRICE	WEIGHT (LBS)
Wilderness Split			
WSS2004FL	Wilderness Split 20" - 4 Piece Firepit Log set, based on Mountain Timber series logs	\$370	30
WSS3007FL	Wilderness Split 30" - 7 Piece Firepit Log set, based on Mountain Timber series logs	\$955	84
WSS5013FL	Wilderness Split 50" - 13 Piece Firepit Log set, based on Mountain Timber series logs	\$2,135	169
Wilderness Char			
WCS2006FL	Wilderness Char 20" - 6 Piece Firepit Log set, based on Magnificent Inferno series logs	\$296	20
WCS3010FL	Wilderness Char 30" - 10 Piece Firepit Log set, based on Magnificent Inferno series logs	\$870	67
WCS5019FL	Wilderness Char 50" - 19 Piece Firepit Log set, based on Magnificent Inferno series logs	\$1,678	140
Wilderness Oak			
WOS3008FL	Wilderness Oak 30" - 8 Piece Firepit Log set, based on Grand Oak series logs	\$561	76
WOS5014FL	Wilderness Oak 50" - 14 Piece Firepit Log set, based on Grand Oak series logs	\$1,094	128

Hot Surface Ignition Kit

MODEL #	DESCRIPTION	PRICE	WEIGHT (LBS)
FTHS-PO	Hot Surface Ignition Kit	\$1,951	5



OLDE WORLD BASKET

Tested to ANSI Z21.60 Standards

Olde World Baskets may be ordered with refractory logs or ceramic fiber coals
 Olde World Baskets need a minimum of 10" depth

MODEL #		BASKET PRICE	WEIGHT	BASKET PRICE
		NATURAL GAS	LBS	LP GAS
FACTORY INSTALLED WITH SAFETY PILOT				
OBLO19N1T	FULL SET WITH LOGS	\$1,150	64	\$1,150
OBCO19N1T	FULL SET WITH COALS	\$1,150	54	\$1,150

INSTRUCTIONS FOR ORDERING PROPANE BURNER KITS

Specify if for Propane Gas by adding a "P" in the place of "N" to the model # (eg.OBLO19P1T)

SAFETY PILOT REMOTE KITS	PRICE	WEIGHT	DESCRIPTION
SAFETY PILOT REMOTE KITS			
AF-LCK	\$328	1	Latch-Tap Kit (ON/OFF) with RC-S6V-LT Remote Control Included
AF-SCK	\$372	1	Variable Flame Height with RC-S6V-ST Remote Control Included



MODEL #	PRICE	WEIGHT	DESCRIPTION
REPLACEMENT PARTS			
OG19	\$421	41	Basket Only, No Burner
OB14	\$215	7	Burner Only, No Safety Pilot Valve
OBCO14	\$244	2	Coals Only
OBL05	\$244	10	Logs Only

KIVA GAS LOG SET

NON-CERTIFIED

MODEL #	PRICE	WEIGHT	DESCRIPTION
KIVA GAS LOG SET			
KIS1005AA	\$227	17	Logs only
10SNKV0A1	\$267	28	Accessory Kit, No valve, NG



SINGLE SIDE - PINNACLE LOG SERIES

PINNACLE LOGS - SHORT

SET SIZE	LOOSE LOG MODEL #	LOOSE LOG PRICE	WEIGHT LBS
SHORT STACK			
SIERRA STACK			
12"	SRS1204PL	\$239	6
18"	SRS1805PL	\$314	7
24"	SRS2406PL	\$383	8
30"	SRS3007PL	\$457	9

Sierra stacks are 14" tall



Pinnacle Short Stack

PINNACLE LOGS - MID

SET SIZE	LOOSE LOG MODEL #	LOOSE LOG PRICE	WEIGHT LBS
MID STACK			
EVEREST STACK			
18"	EVS1806PL	\$418	8
24"	EVS2407PL	\$493	9
30"	EVS3008PL	\$565	10

Everest stacks are 24" tall



Pinnacle Mid Stack

PINNACLE BURNER KITS

LOOSE LOG KIT SIZE	BURNER KIT NG MODEL #	PIN KIT PRICE NATURAL GAS	WEIGHT LBS	PIN KIT PRICE LP GAS
FACTORY INSTALLED SAFETY PILOT				
12"	12CNRM1T5	\$678	20	\$711
18"	18CNRM1T5	\$741	25	\$774
24"	24CNRM1T5	\$806	30	\$839
30"	30CNRM1T5	\$872	35	\$905
FACTORY INSTALLED VARIABLE FLAME WITH REMOTE				
12"	12CNRM1K5	\$1,050	20	\$1,083
18"	18CNRM1K5	\$1,113	25	\$1,146
24"	24CNRM1K5	\$1,178	30	\$1,211
30"	30CNRM1K5	\$1,244	35	\$1,277
ELECTRONIC IGNITION				
12"	12CNRM3F5	\$1,348	20	\$1,381
18"	18CNRM3F5	\$1,411	25	\$1,444
24"	24CNRM3F5	\$1,476	30	\$1,509
30"	30CNRM3F5	\$1,542	35	\$1,575

INSTRUCTIONS FOR ORDERING PROPANE BURNER KITS

Specify if for Propane Gas by adding a "P" in the place of "N" to the model # (eg. 30CPRM3F5)

ACCESSORY KIT ADD ONS

MODEL #	PRICE	WEIGHT	DESCRIPTION
STAINLESS STEEL REFLECTIVE PANEL KIT			
CNT-SSKIT18	\$188	10	Stainless steel reflective back panel with pedestal feet - 18" SETS
CNT-SSKIT24	\$213	10	Stainless steel reflective back panel with pedestal feet - 24" SETS
CNT-SSKIT30	\$238	10	Stainless steel reflective back panel with pedestal feet - 30" SETS
EMBER ENHANCING SYSTEM			
EESD-18	\$75	10	Ember bed enhancer for 18"- 21" sets
EESD-24	\$83	11	Ember bed enhancer for 24"- 27" sets
EESD-30	\$92	11	Ember bed enhancer for 28"- 36" sets
PEDESTAL GRATE FACING			
PGF-18	\$62	5	Cast iron facing for 18"-21" vented sets - 18"-21" vent free sets
COMBO KIT			
CK-6	\$84	9	4 - Bark Chips, 1 = Pine Cone #1203, 1 = Twig #0605GO
BARK CHIP KIT			
BCKGO	\$41	2	4 - Decorative Bark Chips for Ember Bed
CHARRED CHIP KIT			
CCKGO	\$64	2	4 - Decorative Charred Chips for Ember Bed
TWIG KIT			
TK-2	\$59	6	2 - Decorative Twigs - #602CL, #1110CL
PINE CONE KIT			
DPCK-2	\$41	3	2 - Decorative Pine Cones - #1201, #1203
FIBER DECORATIVE ADD ON KITS			
FCC-3	\$40	1	3 - Decorative Charred Chips for Ember Bed
FCC-7	\$84	1	7 - Decorative Charred Chips for Ember Bed
PINE CONE VALVE CONCEALERS			
1215-BX	\$29	2	Flat decorative pine cones to conceal the valve
PINE CONES			
1201-BX	\$25	1	Small
1203-BX	\$25	1	Small
1204-BX	\$25	1	Small
1205-BX	\$28	2	Medium
1210-BX	\$31	3	Large
BURNER PAN MEDIA			
RW	\$35	1	Rock Wool
PB-5	\$68	1	Platinum Bright Embers - 5 Gram bag
SD-10	\$28	10	Silica Sand - 10 lb. bag
VC	\$25	5	Volcanic Cinders - 5 lb. bag
VM	\$33	1	Vermiculite - 1 lb. bag
BULK MEDIA			
VM-10	\$108	10	Vermiculite - 10 lb. bag
RW-10	\$111	10	PART B (Glowing Embers) ONLY - 10 lb. bag
VCFP-S	\$106	30	5 gal small Vocanic Cinders
VCFP-L	\$92	35	5 gal large Vocanic Cinders
SD-50	\$88	50	Sand - 50 lb. bucket
MANUAL VALVES			
GVEH	\$72	2	Gas Valve 1/2" FIP X 3/8" Flare - Rated 125 F W/ Ext Handle
EH	\$36	1	Extension Handle for GV
JCA-PO	\$76	2	Gas Valve with Knob - Rated 300 F
MISC PARTS			
AM 3/8 X 3/8	\$37	1	Air Mixer - Must designate orifice size
DS	\$5	1	Damper Stop
SB	\$11	2	Support Blocks - Used to support back log on See Thru Sets
FCNW-18	\$28	1	Stainless Non-Harmonic Flex Conn. - 3/8" OD X 18", Vented Sets
FCNW-34	\$41	1	Stainless Non-Harmonic Flex Conn. - 3/8" OD X 34", Vented Sets

STANDARD SAFETY PILOT CONTROLS

300 DEGREE HEAT RATED COMPONENTS - UP TO 110,000 BTU'S

MODEL #	PRICE	WEIGHT	DESCRIPTION	RECOMMENDED SET SIZE
VALVE HEAT SHIELDS				
HSPCCCL	\$29	1	Concrete, universal heat shield for standard, latchtap, and variable flame valve:	
HSSWU445	\$29	1	Metal, universal heat shield for standard, latchtap, and variable flame valve:	
MANUAL SAFETY PILOT KITS				
CPE-PO	\$214	4	Manual Safety Pilot Control - Parts only	15" - 42"
LATCHTAP KITS				
LCK-RC	\$397	1	Latch-Tap Block Kit (ON/OFF) for CPE-PO with RC-S6V-LT Remote Control Included	15" - 42"
LCK-BC	\$421	1	Latch-Tap Block Kit (ON/OFF) for CPE-PO with BPBCS Bark Chip Switch Included	15" - 42"
LCK-WS	\$356	1	Latch-Tap Block Kit (ON/OFF) for CPE-PO with WS-S6V-WIRED Wall Switch Included	15" - 42"
LCK-WWS	\$439	1	Latch-Tap Block Kit (ON/OFF) for CPE-PO with WS-S6V-LT Wall Switch Included	15" - 42"
SAFETY PILOT KIT PARTS				
CPC-C	\$122	1	Manual Safety Pilot Control - Valve only	
SPC-EH	\$14	1	Safety Pilot Control - Extension Handle	
SPC-K	\$11	1	Safety Pilot Control - Knob only	
CLC-BLOCK	\$219	1	Latchtap Block	
VARIABLE FLAME SAFETY PILOT KITS				
MHE-PO-RC	\$706	5	Variable Flame Height Valve Kit, includes RC-S6V-MX remote, valve and pilot	15" - 42"
MHE-PO-BC	\$667	5	Variable Flame Height Valve Kit, includes BPBCS Bark Chip Switch, valve and pilot	15" - 42"
MHE-PO-WS	\$599	5	Variable Flame Height Valve Kit, includes WS-S6V-WIRED Wall Switch, valve and pilot	15" - 42"
MHC-C	\$448	1	Variable Safety Pilot Control - Valve only	15" - 42"
SVO	\$135	1	Gearbox/Motor Remote	N/A

STANDARD COOL MOUNT SAFETY PILOT KITS

300 DEGREE HEAT RATED COMPONENTS - UP TO 110,000 BTU'S

MODEL #	PRICE	WEIGHT	DESCRIPTION	RECOMMENDED SET SIZE
COOL MOUNT SAFETY PILOT KITS				
CP-CMT-PO	\$214	5	Cool Mount Safety Pilot Control	15" - 42"
LT-CMT-PO-RC	\$608	6	Cool Mount Safety Pilot with Latchtap (on/off) and Remote Contro	15" - 42"
MH-CMT-PO-RC	\$706	6	Cool Mount Safety Pilot with Variable Flame Height and Skytech Remote Contro	15" - 42"
MH-CMT-PO-RCA	\$706	6	Cool Mount Safety Pilot with Variable Flame Height and Acumen Remote Contro	15" - 42"
RM-CMT-PO-18	\$577	6	Cool Mount Safety Pilot w/ Millivolt Valve and Wall Switch	15" - 42"
RMB-CMT-PO-18	\$816	7	High Capacity Cool Mount Safety Pilot w/ Millivolt Valve and Wall Switch	30" - 66"

ECO COOL MOUNT SAFETY PILOT KITS

225 DEGREE HEAT RATED COMPONENTS - UP TO 85,000 BTU'S

MODEL #	PRICE	WEIGHT	DESCRIPTION	RECOMMENDED SET SIZE
ECO SAFETY PILOT REMOTE KITS				
AF-CMT-PO	\$214	5	Manual Safety Pilot Control - Parts only	15" - 42"
AF-LCK	\$328	1	Latch-Tap Kit (ON/OFF) for AF-CMT-PO with RC-S6V-LT Remote Control Included	15" - 42"
AF-SCK	\$372	1	Variable Flame Height for AF-CMT-PO with RC-S6V-ST Remote Control Included	15" - 30"
ECO SAFETY PILOT KIT PARTS				
SKC-C	\$114	1	Manual Safety Pilot Control - Valve Only	
SKL	\$124	1	Latchtap Component	
SKS	\$140	1	Variable Flame Servo Component	

PILOT ASSEMBLY PARTS

PILOT ASSEMBLY PARTS - FOR STANDARD, VARIABLE FLAME, AND COOL MOUNT SAFETY PILOT KITS				
RST-18	\$21	1	18" Thermocouple - Use with CPE, SKS, or MHE	
RST-36	\$28	1	36" Thermocouple - Use with CPE, SKS, or MHE	
RSTPB-18	\$34	1	18" Thermocouple & Pilot Burner Assembly - Use with CPE or SKS (SPECIFY NG OR LP)	
RSTPB-36	\$46	1	36" Thermocouple & Pilot Burner Assembly - Use with CPE or SKS (SPECIFY NG OR LP)	
PCA-KIT	\$252	1	24" Mushroom-Type Thermocouple & Pilot Burner Assembly	

PROPANE CONVERSION KITS FOR USE WITH CPE-PO, CP-CMT-PO, LT-CMT-PO-RC, AND AF-CMT-PO

Converts single sided ember burner from NG to LP operation. 36" & 42" See-Thru sets require two kits. Safety Pilot Controls are require for each propane burner and are not included in the PCK. Propane Conversion kits include vermiculite, air mixer, and pilot orifice

MODEL #	PRICE	WEIGHT	DESCRIPTION
CPE-PCK-18	\$61	4	For 15" to 27" sets. (#48 orifice on Air Mixer)
CPE-PCK-30	\$61	4	For 30"to 36" sets. (#38 orifice on Air Mixer)

PROPANE CONVERSION KITS FOR USE WITH MHE-PO-RC AND MH-CMT-PO-RC

Converts single sided ember burner from NG to LP operation. 36" & 42" See-Thru sets require two kits. Safety Pilot Controls are require for each propane burner and are not included in the PCK. Propane Conversion kits include vermiculite, air mixer, and pilot orifice

MODEL #	PRICE	WEIGHT	DESCRIPTION
MAX-PCK-18	\$68	4	For 15" to 27" sets. (#48 orifice on Air Mixer)
MAX-PCK-30	\$68	4	For 30"to 36" sets. (#38 orifice on Air Mixer)

750 MILLIVOLT COMBINATION GAS VALVES

MODEL #	PRICE	WEIGHT	DESCRIPTION	RECOMMENDED SET SIZE
MILLIVOLT SAFETY PILOT KIT				
RME-PO	\$577	5	Millivolt Safety Pilot Control - Parts Only (with 48" pilot leads)	15" - 30"
HIGH CAPACITY MILLIVOLT SAFETY PILOT KIT (Use on 36" and larger sets)				
RMBE-PO	\$816	5	High Capacity (150,000 BTU) Millivolt Pilot Control - Parts Only (with 48" pilot leads)	36" - 60"
MILLIVOLT VALVES AND PILOT ASSEMBLY PARTS				
RSMVNG-C	\$409	2	Millivolt Safety Pilot Control - Valve only	
RSBMV-C	\$648	2	High Capacity (150,000 BTU) Millivolt Pilot Control - Valve only	
RSTP-48	\$81	1	48" Thermopile for MV System	
RSTPGNG-18	\$128.00	1	18" Thermopile & Pilot Burner for MV System NG gas	
RSTPGLP-18	\$128.00	1	18" Thermopile & Pilot Burner for MV System LP gas	
RSTPGNG-48	\$139.00	1	48" Thermopile & Pilot Burner for MV System NG gas	
RSTPGLP-48	\$139.00	1	48" Thermopile & Pilot Burner for MV System LP gas	
PROPANE CONVERSION KITS FOR USE WITH MILLIVOLT PILOT CONTROLS				
Converts single sided ember burner from NG to LP operation. 36" & 42" See-Thru sets require two kits. Safety Pilot Controls are required for each propane burner and are not included in the PCK. Propane Conversion kits include vermiculite, air mixer and pilot orifice.				
MODEL #	PRICE	WEIGHT	DESCRIPTION	
RS-PCK-18	\$106	4	For 15" to 27" sets. (#48 orifice on Air Mixer)	
RS-PCK-30	\$106	4	For 30" to 36" sets. (#42 orifice on Air Mixer)	

REMOTE CONTROLS & SWITCHING ACCESSORIES

MODEL #	PRICE	WEIGHT	DESCRIPTION
REMOTE CONTROL RECEIVER HEAT SHIELD			
FRCHSCL	\$57	1	Remote Control Receiver Heat Shield - Fiber Cover and Base
LATCHTAP REMOTE CONTROLS & SWITCHING ACCESSORIES			
RC-S6V-LT	\$178	1	DC powered remote/receiver for Latch-Tap System - remote features: on/off function
WS-S6V-LT	\$220	1	DC powered WIRELESS wall switch for Latch-Tap- remote features: on/off
BPBCS	\$202	2	DC powered bark chip switch for Latch-Tap System, on/off function
WS-S6V-WIRED	\$137	1	Flame Height Control Wall Switch for Latch-Tap (vented), Cumberland Char or Highland Glow (vent-free)
VARIABLE FLAME REMOTE CONTROL & SWITCHING ACCESSORIES FOR AF-SCK			
RC-S6V-ST	\$178	1	DC powered remote/receiver for AF-SCK - remote features: variable flame height function
AF-SCK	\$372	1	Variable Flame Height for AF-CMT-PO with RC-S6V-ST Remote Control Included
VARIABLE FLAME REMOTE CONTROL & SWITCHING ACCESSORIES FOR MHE			
RC-S6V-MX	\$204	1	DC powered Skytech remote/receiver for variable flame system valves - remote features: variable flame height function
RC-A6V-MX	\$204	1	DC powered Acumen remote/receiver for variable flame system valves - remote features: variable flame height function
MILLIVOLT REMOTE CONTROL & SWITCHING ACCESSORIES			
RC-S12V-MV	\$124	1	Kit includes 12 VDC remote/receiver - remote features: on/off function
RC-112V-BT	\$270	1	Kit includes 12VDC Remote/Receiver & Bluetooth smart phone capability
BT-IBUG	\$190	1	Includes Bluetooth Module Control for smart phone capability
RC-A110V-A	\$211	1	Requires 110 volt A/C electricity - remote features: on/off function, child-proof switch
BCS	\$29	1	Bark chip switch, on/off function
PCS	\$35	2	2 Piece Pine Cone switch, on/off function
WS	\$29	1	Wall switch, on/off function (included with millivolt sets)

ENCLOSED ELECTRONIC IGNITION VALVES

LATCHTAP REMOTE CONTROLS & SWITCHING ACCESSORIES			
DEI-ENC	\$898	7	Electronic Ignition Valve Assembly in Enclosed box - Parts Only
DEI-WTHPF	\$1,195	7	Electronic Ignition Valve Assembly in Weatherproof box - Parts Only
RMBEI-ENC	\$1,650	7	High Capacity Electronic Ignition Assembly in Enclosed box - Parts Only
RMBEI-WTHPF	\$1,894	7	High Capacity Electronic Ignition Assembly in Weatherproof box - Parts Only
PROPANE CONVERSION KITS FOR USE WITH ENCLOSED ELECTRONIC IGNITION			
DX-PCK-18	\$106	4	For Standard sets (#48 orifice on Air Mixer)
RS-PCK-30	\$106	4	For High Capacity sets (#42 orifice on Air Mixer)

ELECTRONIC IGNITION (ON/OFF) SYSTEMS

MODEL #	PRICE	WEIGHT	DESCRIPTION	RECOMMENDED SET SIZE
ELECTRONIC IGNITION PILOT KIT				
DEI-PO	\$626	6	Electronic Ignition Safety Pilot Control - Parts Only (with 48" pilot leads)	15" - 36"
PARTS				
DXMV-C	\$361	1	Electronic Ignition Safety Pilot Control - Valve Only	
DXICM	\$227	1	Integrated Circuit Module for Electronic Ignition Valve	
DXWH	\$25	1	Wiring Harness Assembly for Electronic Ignition Valve	
DXBP	\$25	1	Battery Pack for Electronic Ignition Valve	
3VAC	\$53	1	AC Adapter	
AFPI-48	\$130	1	Pilot & Igniter Assembly for Electronic Ignition Valve (Specify NG or LP)	
PROPANE CONVERSION KITS FOR USE WITH DEI -PO ELECTRONIC IGNITION PILOT CONTROLS				
Converts single sided ember burner from NG to LP operation. 36" & 42" See-Thru sets require two kits. Safety Pilot Controls are required for each propane burner and are not included in the PCK. Propane Conversion kits include vermiculite, air mixer, and pilot orifice				
MODEL #	PRICE	WEIGHT	DESCRIPTION	
DX-PCK-18	\$106	4	For 15" to 27" sets. (#48 orifice on Air Mixer)	
DX-PCK-30	\$106	4	For 30"to 36" sets. (#42 orifice on Air Mixer)	
DEI REMOTE CONTROLS & SWITCHING ACCESSORIES				
RC-S12V-MV	\$124	1	Kit includes 12 VDC remote/receiver - remote features: on/off function	
RC-I12V-BT	\$270	1	Kit includes 12VDC Remote/Receiver & Bluetooth smart phone capability	
BT-IBUG	\$190	1	Includes Bluetooth Module Control for smart phone capability	
RC-A110V-A	\$211	1	Requires 110 volt A/C electricity - remote features: on/off function, child-proof switch	
BCS	\$29	1	Bark chip switch, on/off function	
PCS	\$35	2	2 Piece Pine Cone switch, on/off function	
WS	\$29	1	Wall switch, on/off function (included with millivolt sets)	

ELECTRONIC IGNITION (VARIABLE FLAME) SYSTEMS

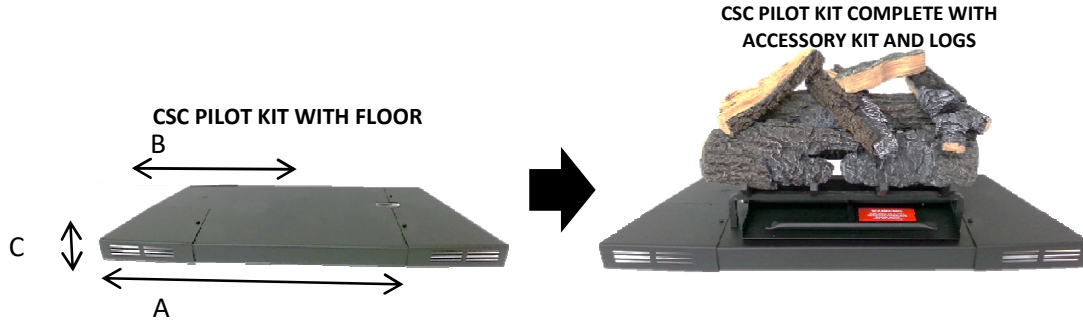
MODEL #	PRICE	WEIGHT	DESCRIPTION	RECOMMENDED SET SIZE
ELECTRONIC IGNITION (VARIABLE FLAME) PILOT KIT				
AEI-PO-RC	\$921	6	Variable Flame Electronic Ignition Pilot Control w/ Remote Control	15" - 30"
PARTS				
AFC-C	\$361	1	Variable Flame Electronic Ignition Pilot Control - Valve Only	
AFICM	\$125	1	Control Module for Electronic Ignition Valve	
AFWH	\$25	1	Wiring Harness Assembly	
AFBP	\$109	1	Battery Power Pack	
AFPI-24	\$93	1	Pilot & Igniter Assembly for Electronic Ignition Valve - 24" leads	
AFRT	\$93	1	On/Off, High/Low remote transmitter	
PROPANE CONVERSION KITS FOR USE WITH AEI-PO-RC ELECTRONIC IGNITION PILOT CONTROLS				
Converts single sided ember burner from NG to LP operation. 36" & 42" See-Thru sets require two kits. Safety Pilot Controls are required for each propane burner and are not included in the PCK. Propane Conversion kits include vermiculite, air mixer, and pilot orifice				
MODEL #	PRICE	WEIGHT	DESCRIPTION	
AF-PCK-18	\$67	4	For 15" to 27" sets. (#48 orifice on Air Mixer)	
AF-PCK-30	\$67	4	For 30"to 36" sets. (#42 orifice on Air Mixer)	
ELECTRONIC IGNITION (VARIABLE FLAME) PILOT KIT				
MEI-CMT-PO-RC	\$884	6		15" - 30"
PARTS				
MEI-BP	\$32	1	Battery Pack	
MEI-INT	\$34	1	Brass Interrupter Block	
MEI-PIL	\$80	1	Safety Pilot	
MEI-REC	\$328	1	Receiver Module	
MEI-REM	\$161	1	Remote	
BT-MEI-IMOD	\$316	1	Includes Bluetooth Module Control for smart phone capability	
MEI-SW	\$32	1	Switch Cable	
MEI-TC	\$29	1	Thermocouple Cable	
MEI-V	\$483	1	MEI Valve	
MEI-WH	\$32	1	Wire Harness	
PROPANE CONVERSION KITS FOR USE WITH MEI-CMT-PO-RC ELECTRONIC IGNITION PILOT CONTROLS				
Converts single sided ember burner from NG to LP operation. 36" & 42" See-Thru sets require two kits. Safety Pilot Controls are required for each propane burner and are not included in the PCK. Propane Conversion kits include vermiculite, air mixer, and pilot orifice				
MODEL #	PRICE	WEIGHT	DESCRIPTION	
MEI-PCK-18	\$94	4	For 15" to 27" sets. (#48 orifice on Air Mixer)	
MEI-PCK-30	\$94	4	For 30"to 36" sets. (#42 orifice on Air Mixer)	

CONTROL SYSTEM CONCEALER

VARIABLE FLAME ELECTRONIC IGNITION WITH REMOTE CONTROL

The Control System Concealer is a false floor that hides a variable flame electronic ignition system underneath. It stands 2.5" tall and can be ordered as a parts only kit and paired with a match light set or ordered as a complete kit in NG or LP.

Check the dimensions before you order to ensure the CSC will fit into the fireplace properly.



PILOT KIT WITH FLOOR

Must add a match light accessory kit to pilot kits below.

ELECTRONIC IGNITION PILOT CONTROL FLOOR KITS (WITH VARIABLE FLAME REMOTE CONTROL) - NATURAL GAS				
MODEL #	FRONT WIDTH (A)	BACK WIDTH (B)	DEPTH (C)	PRICE
18NMX-RC (BT)	30	17"	12.5"	\$1,105
24NMX-RC (BT)	36	23"	12.5"	\$1,133
30NMX-RC (BT)	42	29"	12.5"	\$1,161
36NMX-RC (BT)	48	35"	12.5"	\$1,191

FULL BURNER KITS WITH FLOOR

ANSI APPROVED EMBER BURNER FLOOR ACCESSORY KITS (WITH VARIABLE FLAME REMOTE CONTROL) - NATURAL GAS				
MODEL #	FRONT WIDTH (A)	BACK WIDTH (B)	DEPTH (C)	PRICE
18CNEB3X5 (BT)	30	17"	12.5"	\$1,424
24CNEB3X5 (BT)	36	23"	12.5"	\$1,484
30CNEB3X5 (BT)	42	29"	12.5"	\$1,562
36CNEB3X5 (BT)	48	35"	12.5"	\$1,700
ANSI APPROVED EMBER BURNER FLOOR ACCESSORY KITS (WITH VARIABLE FLAME REMOTE CONTROL) - LIQUID PROPANE				
MODEL #	FRONT WIDTH (A)	BACK WIDTH (B)	DEPTH (C)	PRICE
18CPEB3X5 (BT)	30	17"	12.5"	\$1,457
24CPEB3X5 (BT)	36	23"	12.5"	\$1,517
30CPEB3X5 (BT)	42	29"	12.5"	\$1,595
36CPEB3X5 (BT)	48	35"	12.5"	\$1,733
ANSI APPROVED H-BURNER FLOOR ACCESSORY KITS (WITH VARIABLE FLAME REMOTE CONTROL) - NATURAL GAS				
MODEL #	FRONT WIDTH (A)	BACK WIDTH (B)	DEPTH (C)	PRICE
18CNHB3X5 (BT)	30	17"	12.5"	\$1,489
24CNHB3X5 (BT)	36	23"	12.5"	\$1,547
30CNHB3X5 (BT)	42	29"	12.5"	\$1,626
36CNHB3X5 (BT)	48	35"	12.5"	\$1,766
ANSI APPROVED H-BURNER FLOOR ACCESSORY KITS (WITH VARIABLE FLAME REMOTE CONTROL) - LIQUID PROPANE				
MODEL #	FRONT WIDTH (A)	BACK WIDTH (B)	DEPTH (C)	PRICE
18CPHB3X5 (BT)	30	17"	12.5"	\$1,503
24CPHB3X5 (BT)	36	23"	12.5"	\$1,561
30CPHB3X5 (BT)	42	29"	12.5"	\$1,640
36CPHB3X5 (BT)	48	35"	12.5"	\$1,780
ANSI APPROVED SYSTEM 4 FLOOR ACCESSORY KITS (WITH VARIABLE FLAME REMOTE CONTROL) - LIQUID PROPANE				
MODEL #	FRONT WIDTH (A)	BACK WIDTH (B)	DEPTH (C)	PRICE
18CPSF3X5 (BT)	30	17"	12.5"	\$1,688
24CPSF3X5 (BT)	36	23"	12.5"	\$1,753
30CPSF3X5 (BT)	42	29"	12.5"	\$1,818
36CPSF3X5 (BT)	48	35"	12.5"	\$2,354
PROPANE CONVERSION KITS FOR USE WITH CONTROL SYSTEM CONCEALER (CSC)				
Converts single sided ember burner from NG to LP operation.				
Propane Conversion kits include vermiculite, air mixer, and pilot orifice.				
MODEL #	PRICE	WEIGHT	DESCRIPTION	
MEI-PCK-18	\$94	4	For 15" to 27" sets. (#48 orifice on Air Mixer)	
MEI-PCK-30	\$94	4	For 30" to 36" sets. (#38 orifice on Air Mixer)	

BLUETOOTH SMART RECEIVER

Specify Bluetooth capability by adding "BT" to the end of the model #. Add \$260 to price.

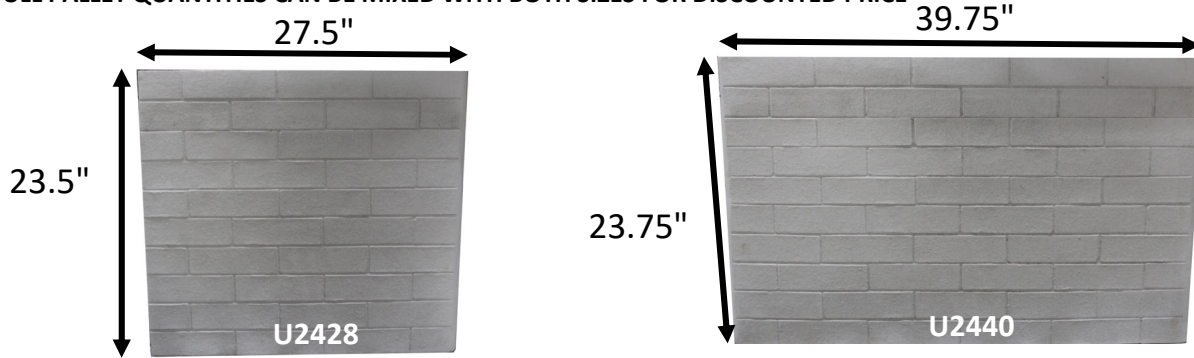
See previous page for parts

REPLACEMENT REFRACTORY PANELS

MODEL #	PRICE	WEIGHT	DESCRIPTION
U2428 (quantities 1-5)	\$206	35	UNIVERSAL REFRACTORY PANEL 24" X 28" - 1" THICK
U2428 (quantities 6-29)	\$189	35	UNIVERSAL REFRACTORY PANEL 24" X 28" - 1" THICK
U2428 (quantities 30+)	\$157	35	UNIVERSAL REFRACTORY PANEL 24" X 28" - 1" THICK
U2440 (quantities 1-5)	\$230	55	UNIVERSAL REFRACTORY PANEL 24" X 40" - 1" THICK
U2440 (quantities 6-29)	\$213	55	UNIVERSAL REFRACTORY PANEL 24" X 40" - 1" THICK
U2440 (quantities 30+)	\$181	55	UNIVERSAL REFRACTORY PANEL 24" X 40" - 1" THICK

FOR UPS SHIPPING ADD \$41 FOR SPECIAL PACKAGING

FULL PALLET QUANTITIES CAN BE MIXED WITH BOTH SIZES FOR DISCOUNTED PRICE



WOOD BURNING GRATES

3/4" Steel Bar

MODEL #	GRATE PRICE	WEIGHT	WELDED RETAINER PRICE	DESCRIPTION
Z-SERIES				ZERO CLEARANCE GRATES - 11" DEPTH
WG2306Z3T (E)	\$145	21	\$172	23" front width, 19" back width, 6 bars, ZC box, 4.5" height
WG2707Z3T (E)	\$175	24	\$202	27" front width, 23" back width, 7 bars, ZC box, 4.5" height
M SERIES				MEDIUM DEPTH GRATES - 14" DEPTH
WG2306M3T (E)	\$158	25	\$199	23" front width, 19" back width, 6 bars, Medium depth, 4.5" height
WG2707M3T (E)	\$184	27	\$225	27" front width, 23" back width, 7 bars, Medium depth, 4.5" height
WG3108M3T (E)	\$207	30	\$248	31" front width, 27" back width, 8 bars, Medium depth, 4.5" height
D SERIES				DEEP GRATES - 17" DEPTH
WG2306D3T (E)	\$175	25	\$228	23" front width, 19" back width, 6 bars, Deep depth, 4.5" height
WG2707D3T (E)	\$196	33	\$249	27" front width, 23" back width, 7 bars, Deep depth, 4.5" height
WG3108D3T (E)	\$223	37	\$276	31" front width, 27" back width, 8 bars, Deep depth, 4.5" height
WG3509D3T (E)	\$246	38	\$299	35" front width, 31" back width, 9 bars, Deep depth, 4.5" height
SEE-THRU				SEE THRU GRATES - 17" DEPTH
WG2306ST3T (E)	\$178	33	\$231	23" width, 6 bars, Deep depth, 4.5" height
WG2707ST3T (E)	\$202	33	\$255	27" width, 7 bars, Deep depth, 4.5" height
WG3108ST3T (E)	\$228	40	\$281	31" width, 8 bars, Deep depth, 4.5" height
WG3509ST3T (E)	\$252	45	\$305	35" width, 9 bars, Deep depth, 4.5" height
WG4110ST3T (E)	\$277	52	\$330	41" width, 10 bars, Deep depth, 4.5" height

BLACK STEEL EMBER RETAINERS			
MODEL #	PRICE	WEIGHT	DESCRIPTION
WGZE	\$27	2	Zero Clearance Ember Retainer
WGME	\$41	3	Medium Ember Retainer
WGDE	\$53	4	Deep Ember Retainer

Specify Grate with welded on ember retainer by adding "E" to the end of the model #

INDIVIDUAL LOGS (FIBER)

LOG MODEL #	SIZE INCHES	WEIGHT LBS	PRICE
CROSS TIMBERS			
F0713GO	13	0.6	\$64
F1509GO	9	0.4	\$73
F2012GO	11	0.8	\$120
F2015GO	10	0.9	\$100
F2510GO	19	0.4	\$62
F2512GO	12	1.2	\$86
F2711GO	12	1.7	\$98
F2713GO	13	2.3	\$130
F2714GO	14	2	\$124
F2719GO	19	3	\$141
RUSTIC TIMBERS			
F9101GO	8	0.4	\$77
F9102GO	9	0.4	\$77
F9103GO	10	0.3	\$77
F9104GO	10	0.6	\$77
F9106GO	9	0.2	\$73
F9108GO	11	0.5	\$73
F9109GO	12	0.5	\$73
F9110GO	13	0.5	\$73
F9111GO	13	0.9	\$75
F9112GO	15	0.7	\$75
F9113GO	12	1.2	\$86
F9117GO	17	1.2	\$86
F9120GO	20	1.5	\$93
KODIAK TIMBERS			
F0827GO	27	4.25	\$206
F2713GO	13	2.5	\$130
F2512GO	12	1.5	\$86
F2719GO	19	3.02	\$141
F9214GO	14	2.4	\$139
F0713GO	13	0.6	\$64
F9215GO	15	2.4	\$139
F9120GO	20	1.53	\$93
F9111GO	11	1.6	\$75
F9102GO	2	0.38	\$77
F9206GO	6	0.7	\$64
F9108GO	8	0.53	\$73
F9209GO	9	0.75	\$64
F9208GO	8	0.6	\$83
F9110GO	10	0.53	\$73

LOG MODEL #	SIZE INCHES	WEIGHT LBS	PRICE
WOODLAND TIMBERS			
F9202GO	8	0.3	\$57
F9203GO	7	0.5	\$81
F9204GO	9	0.5	\$64
F9206GO	10	0.7	\$64
F9207GO	12	0.8	\$64
F9208GO	12	0.7	\$83
F9209GO	10	0.5	\$64
F9210GO	9	1.6	\$122
F9211GO	9	1.6	\$122
F9212GO	12	2.1	\$128
F9213GO	12	2.1	\$128
F9214GO	13	2.4	\$139
F9215GO	14	2.4	\$139
ASPEN TIMBERS			
F1801BI	9	1.7	\$167
F1802BI	9	1.8	\$170
F1803BI	10	2.5	\$177
F1804BI	9.5	2.3	\$175
F1805BI	11.5	3	\$180
F1806BI	12	3.2	\$185
F1807BI	7	0.4	\$62
F1808BI	8	0.3	\$57
F1811BI	10.5	0.8	\$81
F1812BI	12	0.8	\$77
F1813BI	13.5	1.7	\$115
F1814BI	14.5	1.3	\$93
F1815BI	15.5	1.3	\$98
F1817BI	16.5	2.4	\$200
F1820BI	21	2.3	\$185
F1824BI	22.5	4.6	\$220

LOG MODEL #	SIZE INCHES	WEIGHT LBS	PRICE
BACK LOGS (CROSS, RUSTIC, WOODLAND)			
F0017GO	17	0.2	\$110
F0822GO	22	3.3	\$146
F0827GO	27	4.3	\$206
F2522GO	21	3	\$141
FR018GO	18	1.8	\$115
FR020GO	20	3.3	\$146
FR024GO	24	2.2	\$130
FR030GO	30	3.5	\$175
FR036GO	36	4	\$180
CANYON TIMBERS			
F0128TN	28	6.5	\$205
F2511TN	11	1	\$80
F2512TN	12	1.5	\$84
F2522TN	21	2.95	\$141
F2514TN	14	1.3	\$84
F3503TN	4	0.1	\$50
F3504TN	4	0.1	\$50
F3506TN	6	0.1	\$50
F3509TN	9	0.9	\$72
F9310TN	10	0.75	\$80
F3510TN	10	0.4	\$74
F3511TN	11	1.6	\$90
F3512TN	12	0.4	\$57
F3516TN	16	0.9	\$72
F3520TN	20	1.2	\$95
F3524TN	24	2.8	\$146

INDIVIDUAL LOGS

LOG MODEL #	SIZE		WEIGHT LBS	PRICE
	INCHES	LBS		
BLAZING PECAN				
2511GO	14	5	5	\$76
2512GO	12	5	5	\$76
2513GO	13	6	6	\$88
2514GO	14	6	6	\$88
2517GO	18	12	12	\$105
2518GO	18	17	17	\$175
2521GO	21	21	21	\$212
2522GO	22	19	19	\$184
2524GO	24	29	29	\$308
2527GO	27	30	30	\$314
2530GO	30	31	31	\$326
CLASSIC OAK				
0012CL	12	4	4	\$61
0015CL	15	6	6	\$61
0017CL	17	8	8	\$72
0018CL	18	10	10	\$80
0020CL	20	11	11	\$80
0022CL	22	16	16	\$115
0024CL	24	17	17	\$120
0030CL	30	20	20	\$141
0104CL	7	2	2	\$21
0508CL	7	2	2	\$21
0515CL	15	6	6	\$61
0521CL	21	15	15	\$103
DRIFTWOOD				
0303DR	8	2	2	\$21
0304DR	9	1	1	\$21
0313DR	13	4	4	\$63
0314DR	14	3	3	\$47
0315DR	15	4	4	\$63
0317DR	18	11	11	\$74
0318DR	18	10	10	\$84
0324DR	24	12	12	\$124
0325DR	25	10	10	\$94
0328DR	28	20	20	\$151

LOG MODEL #	SIZE		WEIGHT LBS	PRICE
	INCHES	LBS		
GRAND OAK				
0101GO	7	2	2	\$21
0112GO	12	4	4	\$63
0114GO	15	6	6	\$63
0115GO	15	9	9	\$84
0116GO	16	9	9	\$84
0117GO	17	11	11	\$92
0118GO	18	12	12	\$103
0119GO	18	15	15	\$107
0121GO	21	18	18	\$161
0122GO	22	17	17	\$133
0124GO	24	25	25	\$200
0127GO	27	33	33	\$233
0128GO	28	22	22	\$180
0130GO	30	36	36	\$248
0136GO	36	40	40	\$308
0142GO	42	47	47	\$362
0148GO	48	55	55	\$413
0166GO	66	110	110	\$800
INFERNO SERIES				
2110GO	10	3	3	\$63
2111GO	12	7	7	\$141
2114GO	14	7	7	\$141
2117GO	17	5	5	\$141
2123GO	21	8	8	\$191
2125GO	24	9	9	\$197
MAGNIFICENT INFERNO				
2711GO	11	6	6	\$107
2713GO	13	8	8	\$107
2714GO	14	11	11	\$115
2719GO	19	14	14	\$200
MOUNTAIN TIMBER				
3215MT	15	8	8	\$122
3308MT	8	1	1	\$41
3312MT	12	12	12	\$184
3315MT	15	14	14	\$212
3317MT	17	9	9	\$136
3319MT	19	20	20	\$308
3321MT	21	21	21	\$308
3322MT	22	18	18	\$281
3324MT	24	30	30	\$457
3325MT	25	21	21	\$323
3328MT	28	66	66	\$999
3330MT	30	17	17	\$262

LOG MODEL #	SIZE		WEIGHT LBS	PRICE
	INCHES	LBS		
SUPREME PONDEROSA				
3112GO	12	15	15	\$193
3114GO	14	21	21	\$216
3115GO	15	21	21	\$207
3117GO	17	27	27	\$228
3118GO	18	23	23	\$239
3120GO	20	28	28	\$264
3207FSGO	7	1	1	\$29
3214GO	14	7	7	\$99
3215GO	15	8	8	\$107
3217GO	17	12	12	\$159
3218GO	18	16	16	\$212
TWIGS				
0509CL	8	2	2	\$21
0602CL	10	2	2	\$29
0603CL	11	2	2	\$29
0605CL	9	2	2	\$21
0711GO	11	3	3	\$37
TWILIGHT INFERNO				
2111GO	11	7	7	\$141
2114GO	14	9	9	\$141
3011GO	11	7	7	\$129
3014GO	14	9	9	\$175
3019GO	19	15	15	\$193
WESTERN PINE				
1509GO	9	2	2	\$37
1510GO	10	2	2	\$37
1511GO	11	4	4	\$74
1512GO	12	3	3	\$74
1514GO	14	5	5	\$80
1515GO	15	7	7	\$92
1516GO	16	10	10	\$124
1517GO	17	7	7	\$92
1518GO	18	13	13	\$133
1520GO	20	12	12	\$127
1522GO	22	20	20	\$189
1524GO	24	20	20	\$214
1525GO	25	16	16	\$187
1529GO	29	23	23	\$197
1530GO	30	30	30	\$276
1536GO	36	40	40	\$407
1542GO	42	46	46	\$457
1548GO	48	50	50	\$516

Notes